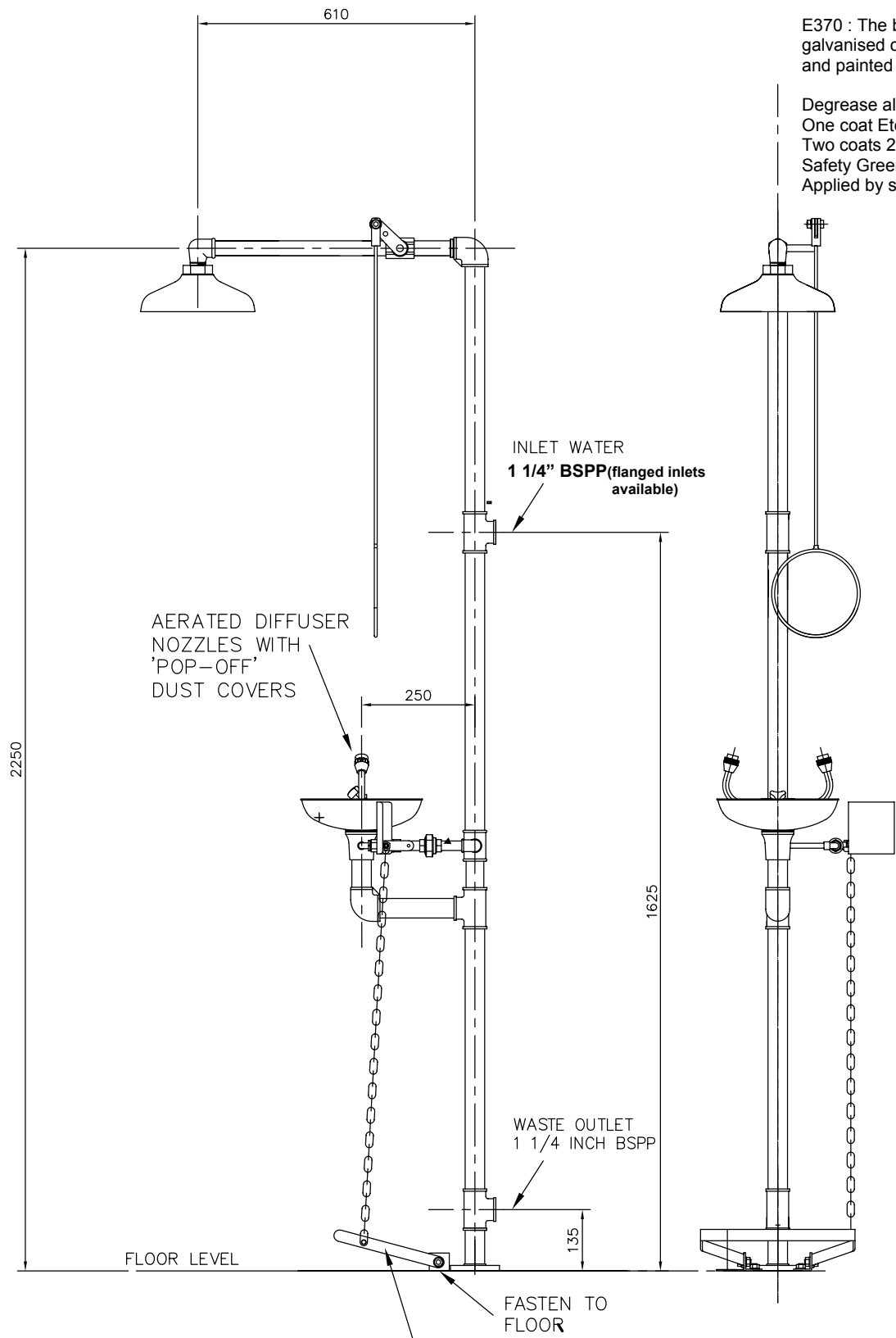
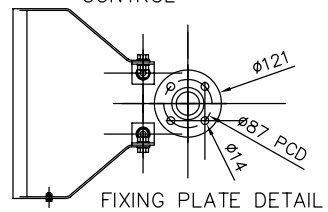


E370 : The baseplate and tubulars are galvanised carbon steel to BS EN ISO 1461 and painted for extra protection as follows:-

Degrease all surfaces.
 One coat Etch Primer chromate free
 Two coats 222 topcoat enamel paint - colour: Safety Green to RAL6029
 Applied by spray.



OPTIONAL EYEBATH FOOT TREADLE CONTROL



Unit will require assembly on site.
 Packed in cardboard box.
 Size 120 x 37 x 28cms
 Gross weight : 28kg

| | | | | | |
|--|--------------|-----------------|-------------------------|----------------------|---|
| PROPRIETARY AND CONFIDENTIAL THE INFORMATION CONTAINED IN THIS DRAWING IS THE SOLE PROPERTY OF SHOWERS & EYEBATHS SERVICES LTD. ANY REPRODUCTION IN PART OR AS A WHOLE WITHOUT THE WRITTEN PERMISSION OF Showers & Eyebaths services LTD IS PROHIBITED. | Model: | E370/E370S/S370 | Description : | | |
| | Date | 09-12-2009 | COMBINED SHOWER/EYEBATH | | |
| | Rev Date | 09-12-2009 | Weight: 27.5 KG approx | Rev | B |
| | SHEET 1 OF 1 | A4 | Scale 1:50 | Do not scale drawing | |

ATS ShieldSafe™
 COMPLY • PROTECT • INNOVATE

ALPINE TECHNICAL SERVICES
 Midvale, UT 84047
800.747.9953
 ATSShieldSafe.com